

SGL-F

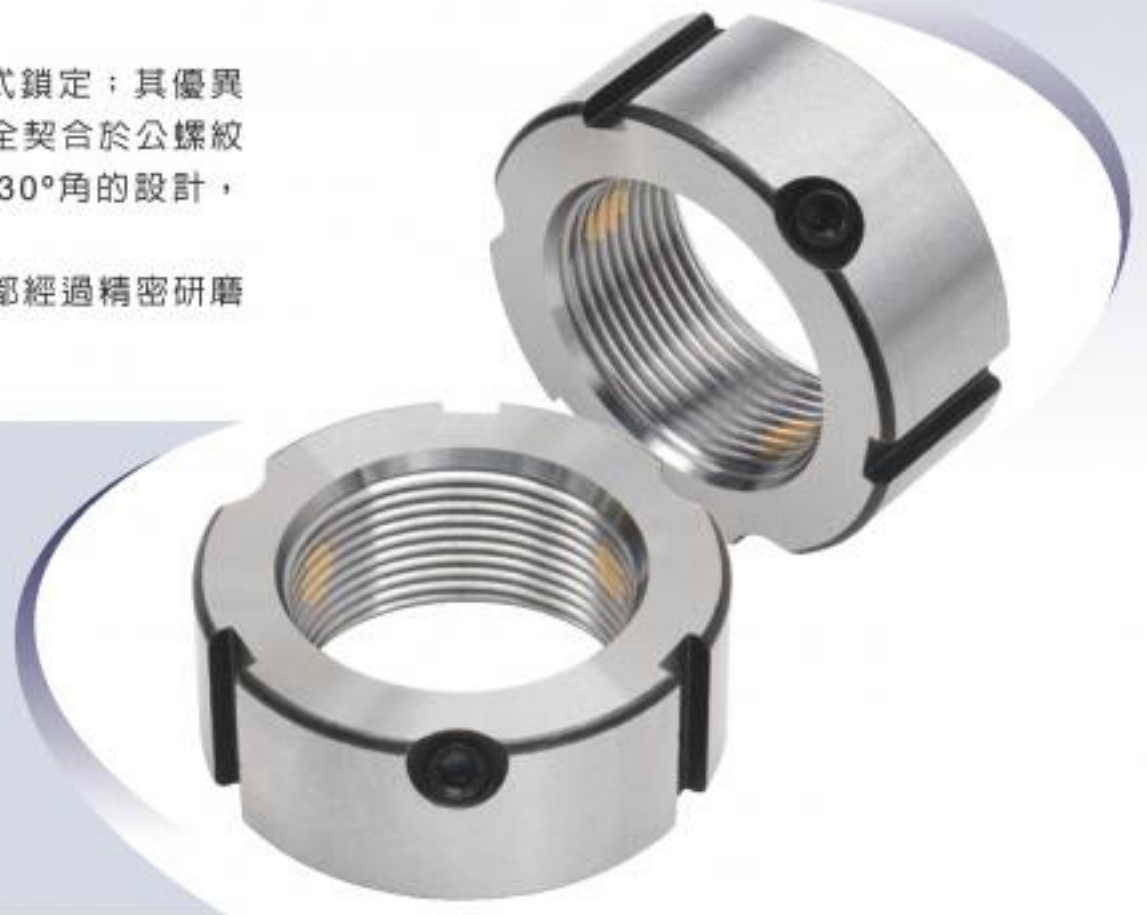
Thread	D	h	d	n x g / b	t / c	m	MAX. Nm
SGL-F M14 x 1.5	30	14	25	3 x 4 / -	2	M5	4.5
SGL-F M15 x 1	30	14	25	3 x 4 / -	2	M5	4.5
SGL-F M16 x 1.5	30	14	25	3 x 4 / -	2	M5	4.5
SGL-F M17 x 1	32	16	27	3 x 4 / -	2	M5	4.5
SGL-F M18 x 1.5	32	16	27	3 x 4 / -	2	M5	4.5
SGL-F M20 x 1	38	16	33	3 x 4 / -	2	M6	4.5
SGL-F M20 x 1.5	38	16	33	3 x 4 / -	2	M6	8.0
SGL-F M22 x 1.5	38	16	33	3 x 4 / -	2	M6	8.0
SGL-F M24 x 1.5	38	18	33	3 x 5 / -	2	M6	8.0
SGL-F M25 x 1.5	38	18	33	3 x 5 / -	2	M6	8.0
SGL-F M27 x 1.5	40	18	35	3 x 5 / -	2	M6	8.0
SGL-F M30 x 1.5	45	18	40	3 x 5 / -	2	M6	8.0
SGL-F M33 x 1.5	50	18	45	3 x 5 / -	2	M6	8.0
SGL-F M35 x 1.5	52	18	47	3 x 5 / -	2	M8	18.0
SGL-F M36 x 1.5	52	18	47	3 x 5 / -	2	M8	18.0
SGL-F M39 x 1.5	58	20	52	3 x 6 / -	2.5	M8	18.0
SGL-F M40 x 1.5	58	20	52	3 x 6 / -	2.5	M8	18.0
SGL-F M42 x 1.5	62	20	56	3 x 6 / -	2.5	M8	18.0
SGL-F M45 x 1.5	65	20	59	3 x 6 / -	2.5	M8	18.0
SGL-F M48 x 1.5	70	20	64	3 x 6 / -	2.5	M8	18.0
SGL-F M50 x 1.5	70	20	64	3 x 6 / -	2.5	M8	18.0
SGL-F M52 x 1.5	73	22	68	3 x 7 / Ø6	3	M8	18.0
SGL-F M55 x 2	75	22	68	3 x 7 / Ø6	3	M8	18.0
SGL-F M56 x 2	75	22	68	3 x 7 / Ø6	3	M8	18.0
SGL-F M60 x 2	80	22	73	3 x 7 / Ø6	3	M8	18.0
SGL-F M64 x 2	85	22	78	3 x 7 / Ø6	3	M8	18.0
SGL-F M65 x 2	85	22	78	3 x 7 / Ø6	3	M8	18.0

SGL-F 牙腹鎖定

此型螺帽鎖定方式為螺紋30°角，三點式鎖定；其優異的鎖定設計，能使固定鋼上之螺紋，完全契合於公螺紋上，使其防鬆效果完美無缺，更因為其30°角的設計，減少了因為鎖緊螺絲因而產生的力距。

螺帽本身之內螺紋、端面、背面、外圓都經過精密研磨加工，可符合高速旋轉所要求的精度。

- 材質：SCM440(42CrMo4)調質
- 螺紋精度：ISO 4H精密研磨
- 平面偏擺：0.002mm
- 硬度：HRC 28° ~ 32°
- 平行度：0.002mm
- 同心度：0.005mm



Thread	D	h	d	n x g / b	t / c		m	MAX. Nm
SGL-F M68 x 2	92	24	84	3 x 8 / Ø6	3.5	81	M8	18.0
SGL-F M70 x 2	92	24	84	3 x 8 / Ø6	3.5	81	M8	18.0
SGL-F M72 x 2	94	24	86	3 x 8 / Ø6	3.5	83	M8	18.0
SGL-F M75 x 2	98	24	90	3 x 8 / Ø6	3.5	87	M8	18.0
SGL-F M76 x 2	98	24	90	3 x 8 / Ø6	3.5	87	M8	18.0
SGL-F M80 x 2	105	24	96	3 x 8 / Ø7	3.5	93	M8	18.0
SGL-F M85 x 2	110	24	102	6 x 8 / Ø7	3.5	98	M8	18.0
SGL-F M90 x 2	120	26	108	6 x 10 / Ø7	4	105	M8	18.0
SGL-F M95 x 2	125	26	113	6 x 10 / Ø7	4	110	M8	18.0
SGL-F M100 x 2	130	26	118	6 x 10 / Ø7	4	115	M8	18.0
SGL-F M105 x 2	140	28	125	6 x 10 / Ø7	4	123	M10	35.0
SGL-F M110 x 2	145	28	132	6 x 10 / Ø7	4	128	M10	35.0
SGL-F M115 x 2	150	28	137	6 x 10 / Ø7	4	133	M10	35.0
SGL-F M120 x 2	155	30	142	6 x 12 / Ø7	5	138	M10	35.0
SGL-F M125 x 2	160	30	147	6 x 12 / Ø7	5	143	M10	35.0
SGL-F M130 x 2	165	30	152	6 x 12 / Ø7	5	148	M10	35.0
SGL-F M135 x 2	175	32	160	6 x 12 / Ø7	5	155	M10	35.0
SGL-F M140 x 2	180	32	165	6 x 12 / Ø7	5	160	M10	35.0
SGL-F M145 x 2	190	32	175	6 x 12 / Ø7	5	168	M10	35.0
SGL-F M150 x 2	195	32	180	6 x 12 / Ø7	5	173	M10	35.0
SGL-F M155 x 3	200	34	180	6 x 14 / Ø8	6	178	M10	35.0
SGL-F M160 x 3	210	34	190	6 x 14 / Ø8	6	185	M10	35.0
SGL-F M165 x 3	210	34	190	6 x 14 / Ø8	6	188	M10	35.0
SGL-F M170 x 3	220	34	200	6 x 14 / Ø8	6	195	M10	35.0
SGL-F M180 x 3	230	36	205	6 x 16 / Ø8	7	205	M12	60.0
SGL-F M190 x 3	240	36	215	6 x 16 / Ø8	7	215	M12	60.0
SGL-F M200 x 3	250	38	225	6 x 16 / Ø8	7	225	M12	60.0