

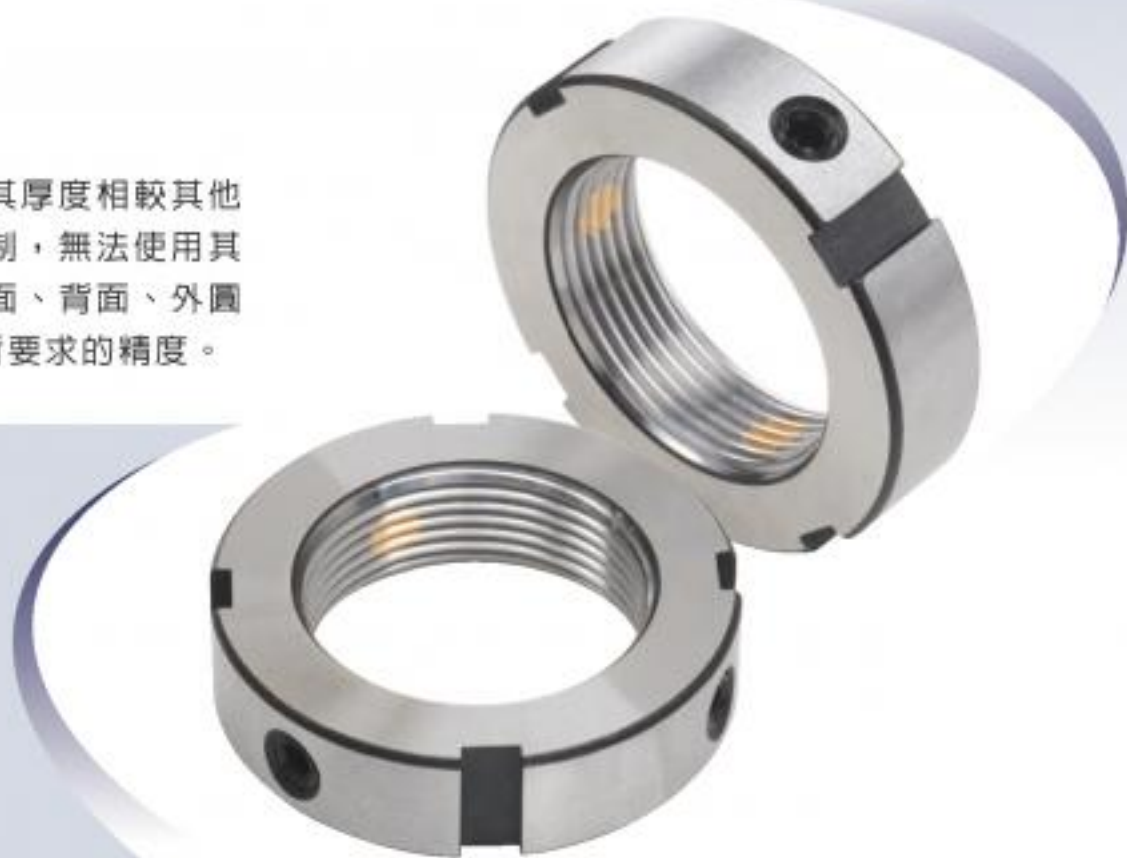
## SGL-R

Thread	D	h	g	t	d	n - m	MAX. Nm
SGL-R M6 x 0.5	16	8	3	2	11	2 - M4	3.5
SGL-R M8 x 0.75	16	8	3	2	11	2 - M4	3.5
SGL-R M10 x 0.75	18	8	3	2	13	2 - M4	3.5
SGL-R M10 x 1	18	8	3	2	13	2 - M4	3.5
SGL-R M12 x 1	20	8	3	2	16	2 - M4	3.5
SGL-R M12 x 1.25	20	8	3	2	16	2 - M4	3.5
SGL-R M14 x 1.5	25	8	3	2	21	2 - M4	3.5
SGL-R M15 x 1	25	8	3	2	21	2 - M4	3.5
SGL-R M16 x 1.5	28	10	4	2	23	2 - M5	4.5
SGL-R M17 x 1	28	10	4	2	23	2 - M5	4.5
SGL-R M18 x 1.5	30	10	4	2	25	2 - M5	4.5
SGL-R M20 x 1	32	10	4	2	27	3 - M5	4.5
SGL-R M20 x 1.5	32	10	4	2	27	3 - M5	4.5
SGL-R M22 x 1.5	35	10	4	2	30	3 - M5	4.5
SGL-R M24 x 1.5	38	12	5	2	33	3 - M6	8.0
SGL-R M25 x 1.5	38	12	5	2	33	3 - M6	8.0
SGL-R M27 x 1.5	42	12	5	2	37	3 - M6	8.0
SGL-R M30 x 1.5	45	12	5	2	40	3 - M6	8.0
SGL-R M33 x 1.5	52	12	5	2	45	3 - M6	8.0
SGL-R M35 x 1.5	52	12	5	2	47	3 - M6	8.0
SGL-R M36 x 1.5	55	14	6	2.5	49	3 - M6	8.0
SGL-R M39 x 1.5	58	14	6	2.5	52	3 - M6	8.0
SGL-R M40 x 1.5	58	14	6	2.5	52	3 - M6	8.0
SGL-R M42 x 1.5	62	14	6	2.5	56	3 - M6	8.0
SGL-R M45 x 1.5	65	14	6	2.5	59	3 - M6	8.0
SGL-R M48 x 1.5	68	14	6	2.5	62	3 - M6	8.0
SGL-R M50 x 1.5	70	14	6	2.5	64	3 - M8	18.0
SGL-R M52 x 1.5	73	16	7	3	66	3 - M8	18.0
SGL-R M55 x 2	75	16	7	3	68	3 - M8	18.0
SGL-R M56 x 2	77	16	7	3	70	3 - M8	18.0

## SGL-R 徑向鎖定

此型螺帽鎖定方式為徑向三點式鎖定，其厚度相較其他產品為薄，適用於螺帽厚度空間受到限制，無法使用其他產品之情況，螺帽本身之內螺紋、端面、背面、外圓都經過精密研磨加工，可符合高速旋轉所要求的精度。

- 材質：SCM440(42CrMo4)調質
- 螺紋精度：ISO 4H精密研磨
- 平面偏擺：0.002mm
- 硬度：HRC 28° ~ 32°
- 平行度：0.002mm
- 同心度：0.005mm



Thread	D	h	g	t	d	n - m	MAX. Nm
SGL-R M60 x 2	80	16	7	3	73	3 - M8	18.0
SGL-R M64 x 2	85	16	7	3	78	3 - M8	18.0
SGL-R M65 x 2	85	16	7	3	78	3 - M8	18.0
SGL-R M68 x 2	92	18	8	3.5	84	3 - M8	18.0
SGL-R M70 x 2	92	18	8	3.5	84	3 - M8	18.0
SGL-R M72 x 2	95	18	8	3.5	86	3 - M8	18.0
SGL-R M75 x 2	98	18	8	3.5	90	3 - M8	18.0
SGL-R M76 x 2	100	18	8	3.5	92	3 - M8	18.0
SGL-R M80 x 2	105	18	8	3.5	96	3 - M8	18.0
SGL-R M85 x 2	110	18	8	3.5	102	3 - M8	18.0
SGL-R M90 x 2	120	20	10	4	108	3 - M8	18.0
SGL-R M95 x 2	125	20	10	4	113	3 - M8	18.0
SGL-R M100 x 2	130	20	10	4	118	3 - M8	18.0
SGL-R M105 x 2	140	22	12	5	125	3 - M8	18.0
SGL-R M110 x 2	145	22	12	5	132	3 - M8	18.0
SGL-R M115 x 2	150	22	12	5	137	3 - M8	18.0
SGL-R M120 x 2	155	24	12	5	142	3 - M8	18.0
SGL-R M125 x 2	160	24	12	5	147	3 - M8	18.0
SGL-R M130 x 2	165	24	12	5	152	3 - M8	18.0
SGL-R M135 x 2	175	26	14	6	160	3 - M10	35.0
SGL-R M140 x 2	180	26	14	6	165	3 - M10	35.0
SGL-R M145 x 2	190	26	14	6	175	3 - M10	35.0
SGL-R M150 x 2	195	26	14	6	180	3 - M10	35.0
SGL-R M155 x 3	200	28	16	7	180	3 - M10	35.0
SGL-R M160 x 3	210	28	16	7	190	3 - M10	35.0
SGL-R M165 x 3	210	28	16	7	190	3 - M10	35.0
SGL-R M170 x 3	220	28	16	7	200	3 - M10	35.0
SGL-R M180 x 3	230	30	18	8	205	3 - M12	60.0
SGL-R M190 x 3	240	30	18	8	215	3 - M12	60.0
SGL-R M200 x 3	250	32	18	8	225	3 - M12	60.0