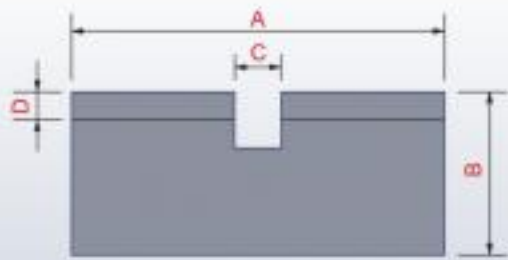
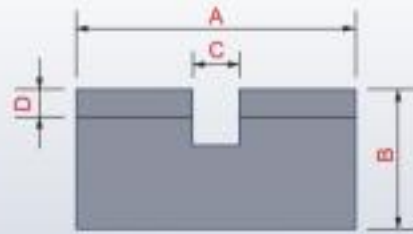


Noise Elimination Screw-in Plugs (Option)

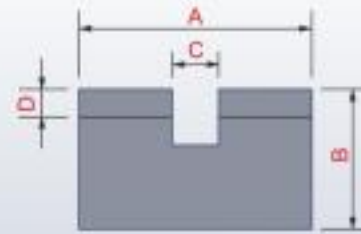
At high speeds, the threaded holes for lock or balance screws generate high frequency noise and subsequent vibration. Our answer to this is the noise elimination screw-in plugs (option). Made of Polycarbonate Fiber, these plugs are extremely light and stable. An added benefit is the elimination of any rust build up.



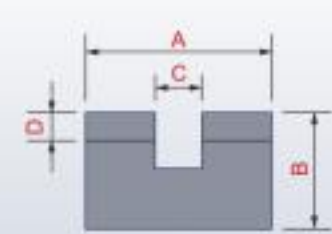
M8 x P1.25



M6 x P1



M5 x P0.8



M4 x P0.7

Noise Elimination Screw-in Plugs (Option) Specifications	A	B	C	D	Weight in Grams
M4 x P0.7	ø4	2.5	1.0	0.6	0.025
M5 x P0.8	ø5	3.0	1.0	0.6	0.045
M6 x P1	ø6	3.0	1.0	0.6	0.075
M8 x P1.25	ø8	3.5	1.0	0.6	0.165

Specifics for Installation



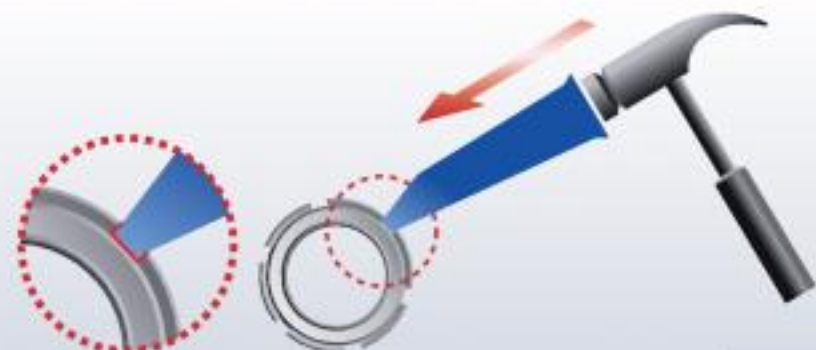
Clean the locknut with naphtha or appropriate industrial degreaser before installation.



Apply a small drop of lubricant to inner threads.



Use appropriate tools or spanner to set the correct preload.



Avoid applying direct pressure to any single point.

