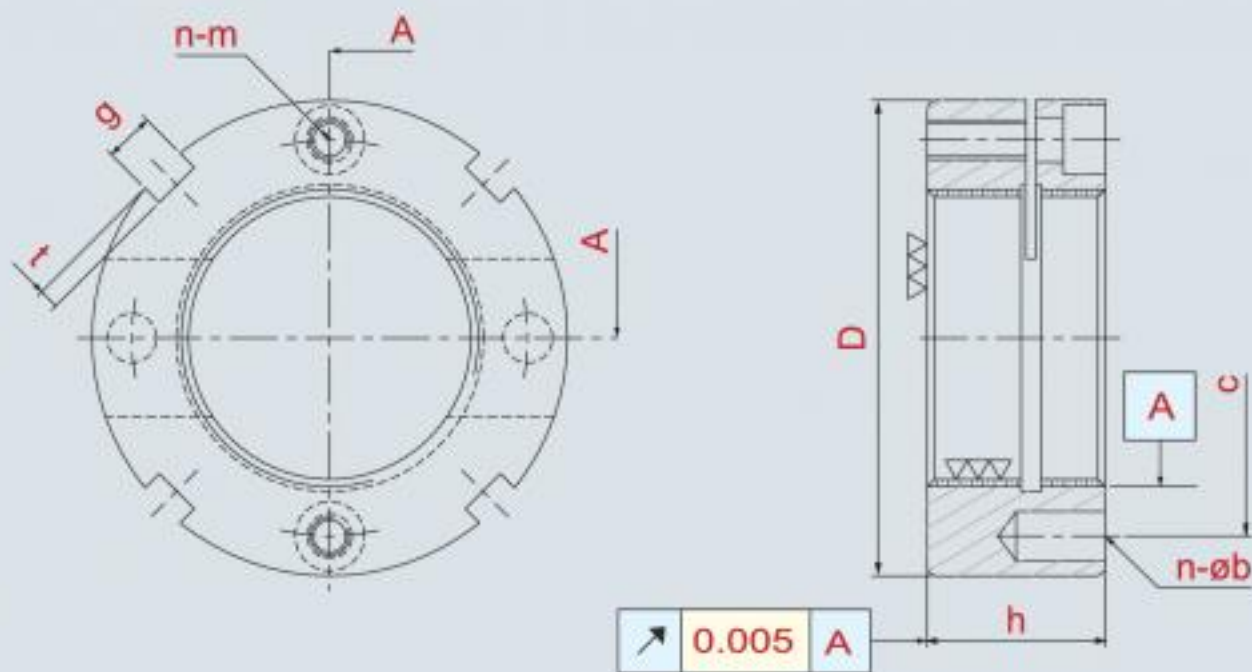


※此型螺帽包含螺絲



YSLK

Thread	D	h	g	t	n-m	c	n-øb	MAX. Nm
YSLK-M16 x 1.5P	34	14	4	2	2-M4	24	2-Ø4	3.5
YSLK-M17 x 1.0P	37	16	4	2	2-M4	26	2-Ø4	3.5
YSLK-M18 x 1.5P	38	16	4	2	2-M4	28	2-Ø4	3.5
YSLK-M20 x 1.0P	40	16	4	2	2-M4	30	2-Ø4	3.5
YSLK-M20 x 1.5P	40	16	4	2	2-M4	30	2-Ø4	3.5
YSLK-M25 x 1.5P	45	18	5	2	2-M4	35	2-Ø5	3.5
YSLK-M30 x 1.5P	48	18	5	2	2-M4	39	2-Ø5	3.5
YSLK-M35 x 1.5P	53	18	5	2	2-M4	44	2-Ø5	3.5
YSLK-M40 x 1.5P	58	20	6	2.5	2-M4	49	2-Ø5	3.5
YSLK-M45 x 1.5P	68	20	6	2.5	2-M4	57	2-Ø6	3.5
YSLK-M50 x 1.5P	70	20	6	2.5	2-M4	60	2-Ø6	3.5
YSLK-M55 x 1.5P	75	22	7	3	2-M4	65	2-Ø6	3.5
YSLK-M55 x 2.0P	75	22	7	3	2-M4	65	2-Ø6	3.5
YSLK-M60 x 1.5P	84	22	7	3	2-M5	72	2-Ø6	4.5
YSLK-M60 x 2.0P	84	22	7	3	2-M5	72	2-Ø6	4.5
YSLK-M65 x 1.5P	88	22	7	3	2-M5	77	2-Ø6	4.5
YSLK-M65 x 2.0P	88	22	7	3	2-M5	77	2-Ø6	4.5
YSLK-M70 x 1.5P	95	24	8	3.5	2-M5	82	2-Ø7	4.5
YSLK-M70 x 2.0P	95	24	8	3.5	2-M5	82	2-Ø7	4.5
YSLK-M75 x 1.5P	100	24	8	3.5	6-M5	87	2-Ø7	4.5
YSLK-M75 x 2.0P	100	24	8	3.5	6-M5	87	2-Ø7	4.5

YSLK螺帽鎖定方式為利用鋼材本身的彈性，以軸向鎖固，強制鎖定。

本產品特別適用於厚度空間受限，工作環境惡劣，螺帽容易鬆脫的場合。

- 材質：SCM440(42CrMo4)調質
- 硬度：HRC28°~32°
- 螺紋精度：ISO 4H
- 加工方式：精密車削
- 平面偏擺：0.005mm



YSLK

Thread	D	h	g	t	n-m	c	n-øb	MAX. Nm
YSLK-M80 x 2.0P	110	24	8	3.5	6-M6	95	2-Ø8	8
YSLK-M85 x 2.0P	115	24	8	3.5	6-M6	100	2-Ø8	8
YSLK-M90 x 2.0P	120	26	10	4	6-M6	105	2-Ø8	8
YSLK-M95 x 2.0P	125	26	10	4	6-M6	110	2-Ø8	8
YSLK-M100 x 2.0P	130	26	10	4	6-M6	115	2-Ø8	8
YSLK-M105 x 2.0P	135	28	10	4	6-M6	120	2-Ø8	8
YSLK-M110 x 2.0P	140	28	10	4	6-M6	125	2-Ø8	8
YSLK-M115 x 2.0P	145	28	10	4	6-M6	130	2-Ø8	8
YSLK-M120 x 2.0P	155	30	12	5	6-M6	136	2-Ø8	8
YSLK-M125 x 2.0P	160	30	12	5	6-M6	140	2-Ø8	8
YSLK-M130 x 2.0P	165	30	12	5	6-M6	148	2-Ø8	8
YSLK-M135 x 2.0P	170	32	12	5	6-M6	153	2-Ø8	8
YSLK-M140 x 2.0P	180	32	12	5	6-M6	160	2-Ø10	8
YSLK-M145 x 2.0P	185	32	12	5	6-M6	165	2-Ø10	8
YSLK-M150 x 2.0P	190	32	12	5	6-M6	170	2-Ø10	8
YSLK-M155 x 2.0P	195	34	14	6	6-M8	175	2-Ø10	18
YSLK-M160 x 3.0P	205	34	14	6	6-M8	178	2-Ø10	18
YSLK-M165 x 3.0P	210	34	14	6	6-M8	184	2-Ø10	18
YSLK-M170 x 3.0P	215	34	14	6	6-M8	193	2-Ø10	18
YSLK-M180 x 3.0P	230	36	16	7	6-M8	205	2-Ø10	18
YSLK-M190 x 3.0P	240	36	16	7	6-M8	215	2-Ø10	18
YSLK-M200 x 3.0P	245	38	16	7	6-M8	223	2-Ø10	18