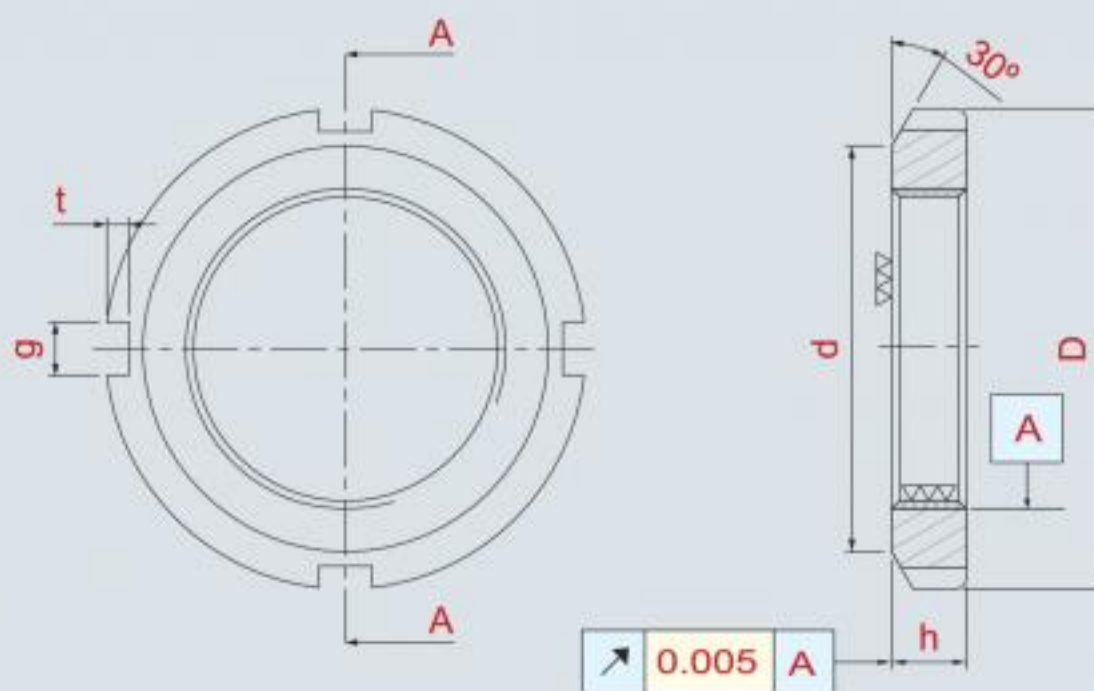




**Precision Locknuts for Ballscrews, High Precision Spindles, Mechanical Transmitting Locking.**

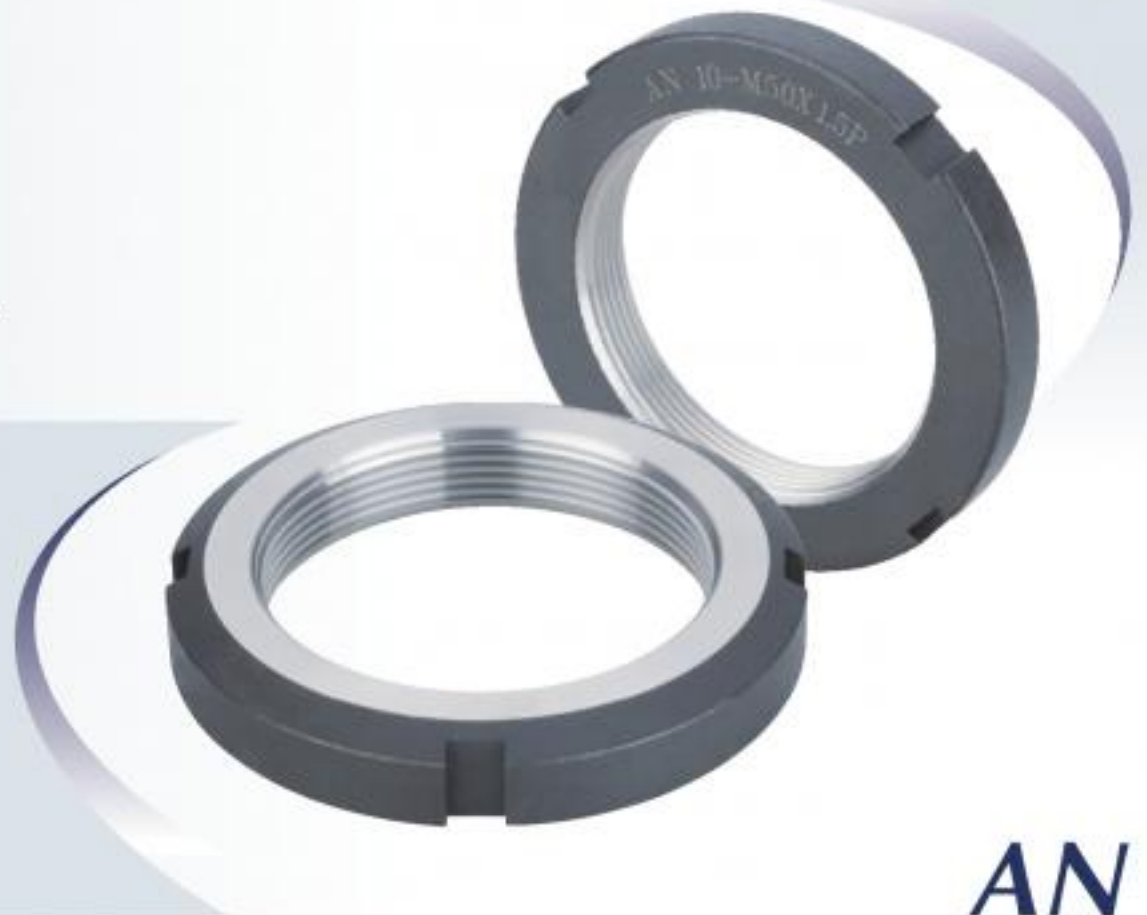


**AN**

Thread	D	h	g	t	d
AN 0-M10 x 0.75P	18	4	3	2	13.5
AN 1-M12 x 1.0P	22	4	3	2	17
AN 2-M15 x 1.0P	25	5	4	2	21
AN 3-M17 x 1.0P	28	5	4	2	24
AN 4-M20 x 1.0P	32	6	4	2	26
AN 5-M25 x 1.5P	38	7	5	2	32
AN 6-M30 x 1.5P	45	7	5	2	38
AN 7-M35 x 1.5P	52	8	5	2	44
AN 8-M40 x 1.5P	58	9	6	2.5	50
AN 9-M45 x 1.5P	65	10	6	2.5	56
AN 10-M50 x 1.5P	70	11	6	2.5	61
AN 11-M55 x 2.0P	75	11	7	3	67
AN 12-M60 x 2.0P	80	11	7	3	73
AN 13-M65 x 2.0P	85	12	7	3	79
AN 14-M70 x 2.0P	92	12	8	3.5	85
AN 15-M75 x 2.0P	98	13	8	3.5	90
AN 16-M80 x 2.0P	105	15	8	3.5	95
AN 17-M85 x 2.0P	110	16	8	3.5	102
AN 18-M90 x 2.0P	120	16	10	4	108

Simple structure AN locknut, simultaneously machined threading and end face, assuring minimum deviation error.

- Material Composition: S45C(C45E4)
- Hardness: HRC26°~28°
- Thread Accuracy: ISO 4H
- Manufacturing Method: High Precision Turning
- Run Out: 0.005mm



## AN

Thread	D	h	g	t	d
AN 19-M95 x 2.0P	125	17	10	4	113
AN 20-M100 x 2.0P	130	18	10	4	120
AN 21-M105 x 2.0P	140	18	12	5	126
AN 22-M110 x 2.0P	145	19	12	5	133
AN 23-M115 x 2.0P	150	19	12	5	137
AN 24-M120 x 2.0P	155	20	12	5	138
AN 25-M125 x 2.0P	160	21	12	5	148
AN 26-M130 x 2.0P	165	21	12	5	149
AN 27-M135 x 2.0P	175	22	14	6	160
AN 28-M140 x 2.0P	180	22	14	6	160
AN 29-M145 x 2.0P	190	24	14	6	172
AN 30-M150 x 2.0P	195	24	14	6	171
AN 31-M155 x 2.0P	200	25	16	7	182
AN 32-M160 x 3.0P	210	25	16	7	182
AN 33-M165 x 3.0P	210	26	16	7	193
AN 34-M170 x 3.0P	220	26	16	7	193
AN 36-M180 x 3.0P	230	27	18	8	203
AN 38-M190 x 3.0P	240	28	18	8	214
AN 40-M200 x 3.0P	250	29	18	8	226